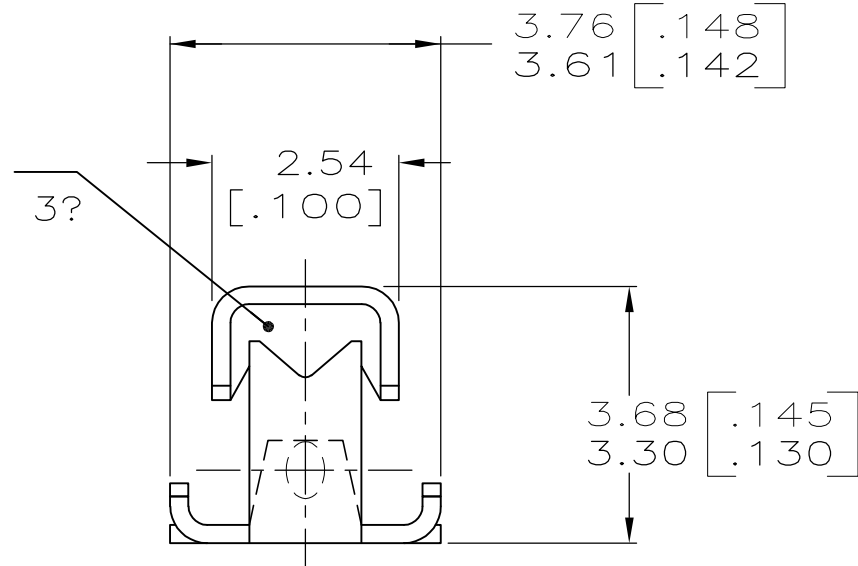
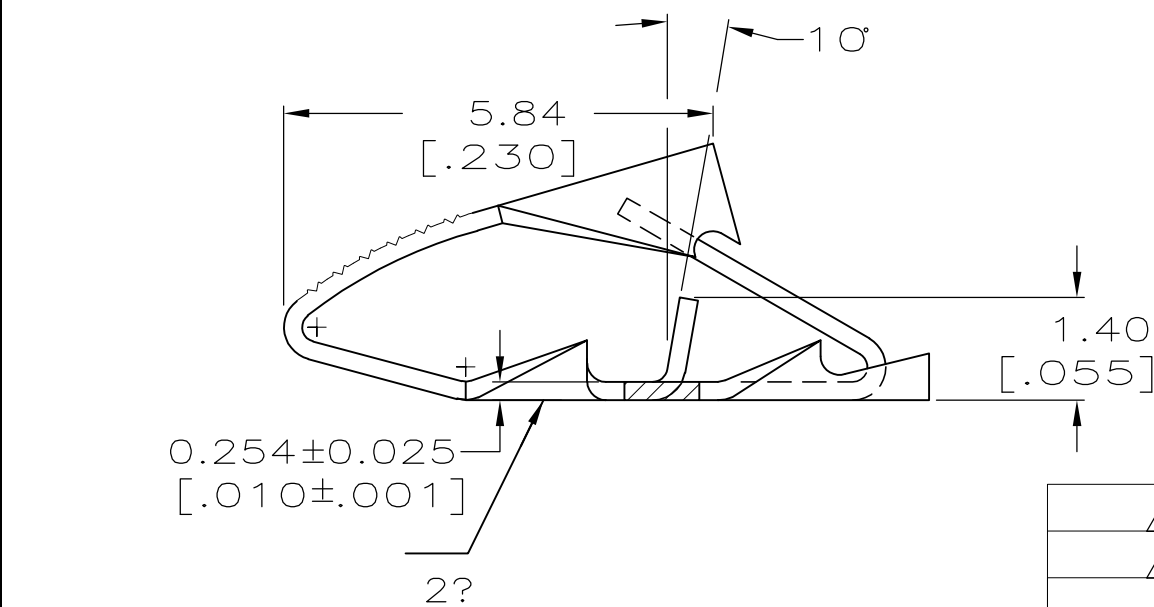
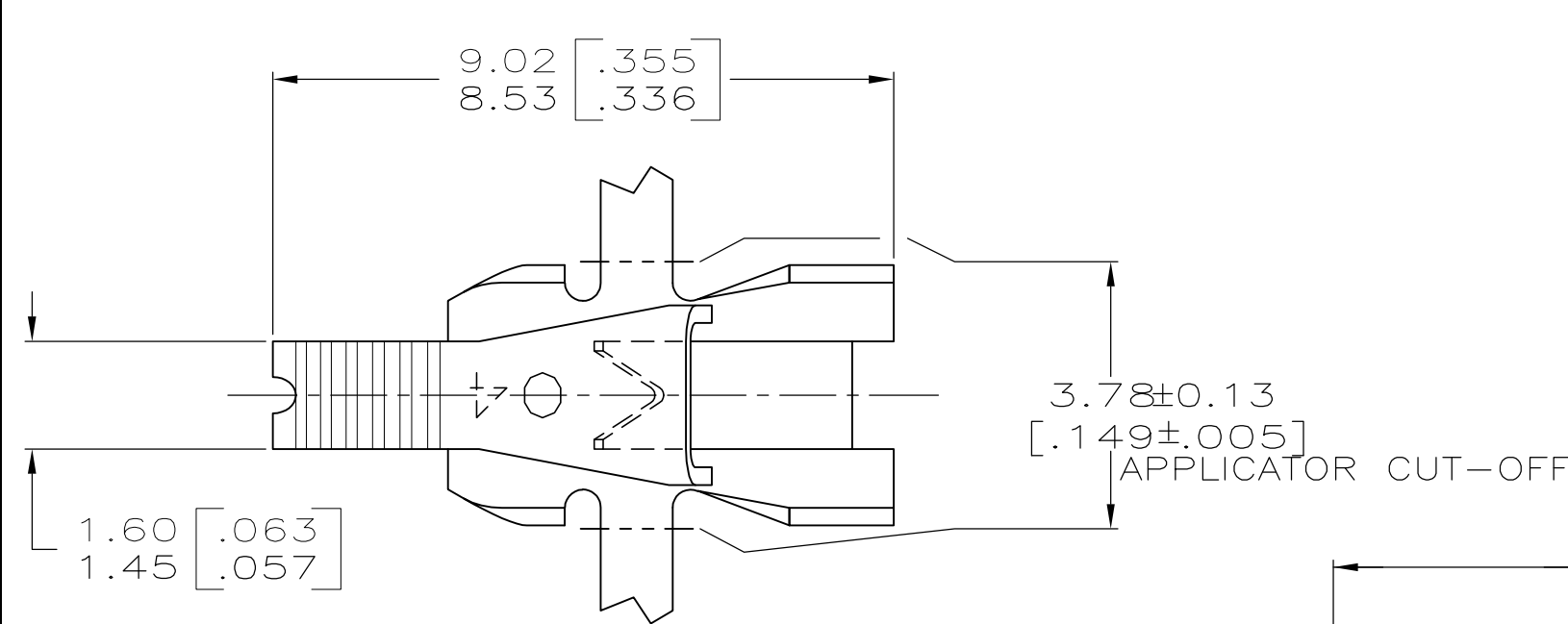


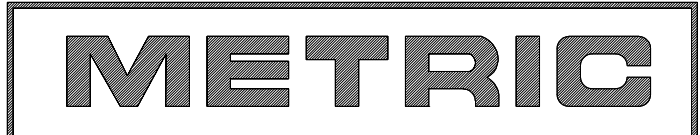
THIS DRAWING IS UNPUBLISHED. RELEASED FOR PUBLICATION, 19
 © COPYRIGHT 19 BY AMP INCORPORATED. ALL INTERNATIONAL RIGHTS RESERVED.

LOC	DIST	P	F	REVISIONS			DATE	APPD
AF	50			ZONE	LTR	DESCRIPTION		
					S	ECR-13-008483	08AUG13	CX/DZ



- 1 CONTINUOUS STRIP ON REELS WITH TERMINALS LOCATED ON 6.10±0.08 [.240±.003] CENTERS.
- 2 IDENTIFICATION NUMBER (04) FOR MAGNET WIRE RANGE.
- 3 SOLID OR FUSED STRANDED LEAD WIRE 0.3-0.9mm² [#22-#18] AWG.
- 4 0.001016 [.000040] MIN TIN.
- 5 TIN PLATE

4	SPLICE FREE	STANDARD REELS	0.02-0.06mm [#52-#42] AWG	62781-3
4	SPLICE FREE	PLASTIC REELS	0.02-0.06mm [#52-#42] AWG	62781-2
5	WITH SPLICE	STANDARD REELS	0.02-0.06mm [#52-#42] AWG	62781-1
FINISH	SPLICE	REELING	COPPER MAGNET WIRE RANGE	PART NUMBER



DO NOT SCALE PRINT. UNLESS SPECIFIED DIMENSIONS IN mm [INCHES] TOLERANCES ON:
 2 PLC DEC ± -
 3 PLC DEC ± 0.25 [.010]
 ANGLES ± -

MATERIAL
 H02 HARD BRASS

FINISH
 SEE TABLE

DR 9/27/89
 MICHAEL S. FEHER
 CHK 10/12/89
 JEFF R. RUTH
 APPD 10/12/89
 NELSON E. NEFF
 APPD 10/12/89
 TERRY L. SHUTTER
 PRODUCT SPEC
 108-2016
 APPLICATION SPEC
 114-2047
 WEIGHT -

AMP AMP INCORPORATED
 Harrisburg, Pa. 17105

NAME
 TERMINAL, POKE-IN,
 MINI MAG-MATE™

SIZE **B** CAGE CODE 00779 DRAWING NO 62781

SCALE 10:1 SHEET 1 OF 1